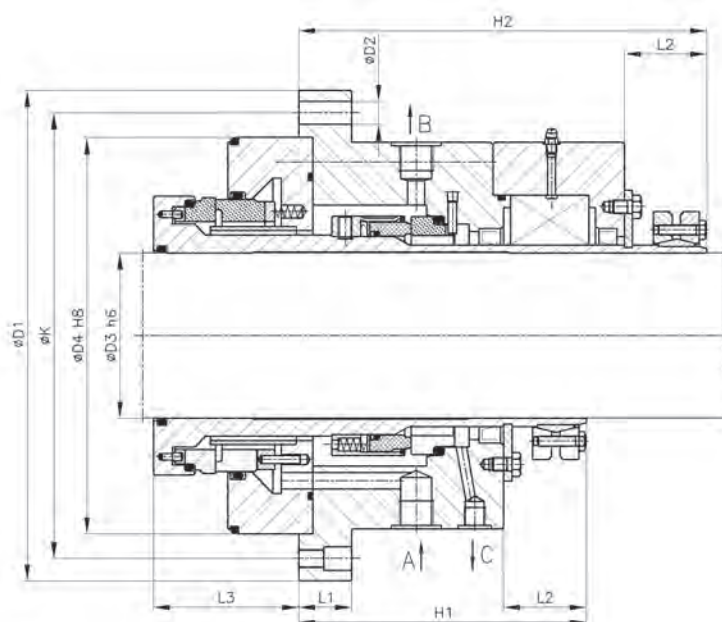


Operating limits*		
Pressure	p_{max}	1.0 MPa
Temperature	t_{max}	200 °C
Speed	v_{max}	10 m/s

* - see note on page 3.

- Double mixer mechanical seal
- Design with horizontal axis of rotation
- Unbalanced
- Multi-spring
- Dual directional
- Without bearing (M4) or with integral bearing (M4L)



CONNECTIONS

A – coolant inlet
B – coolant outlet

C – leakage outlet
G – grease point

Materials

Part	Code
Rotating ring	A, B, Q
Stationary ring	Q, V
Secondary, flexible seals	E, V, K
Spring	M
Other metal parts	G, M

Application

The M4 and M4L mechanical seals are designed for sealing shafts of mixers and reactors in which thick, high viscosity products as well as chemically aggressive and environmentally hazardous ones are processed. The seals are adapted for operating with low-pressure installations of barrier or flushing-cooling fluids.

M4 seals have horizontal or vertical rotation axis and in M4L embodiment they play the role of the bearing shaft unit. The presence of barrier liquid enables seal operation in medium vapours only („dry” running) and prevents the product from getting out into the atmosphere.

They can be made of materials that are approved for use in the pharmaceutical and food industries.

Dimensions (mm)

								M4	M4L		
D3	D1	N x D2	D4	K	L1	L2	L3	H1	H2	A, B	C
50	217	8 x 12	170	195	20	40	82	121	178	G3/8	G1/8
60	227	8 x 12	180	205	20	40	82	130	187	G3/8	G1/8
70	255	8 x 14	195	230	25	45	82	140	202	G1/2	G1/8
80	265	8 x 14	210	240	25	50	82	155	235	G1/2	G1/8
90	285	8 x 14	230	260	25	50	82	170	250	G1/2	G1/8
100	295	8 x 14	240	270	25	50	82	180	260	G1/2	G1/8
110	315	8 x 14	255	290	25	55	82	186	270	G1/2	G1/8
120	335	8 x 16	265	305	30	55	94	200	288	G1/2	G1/8
130	345	8 x 16	275	315	30	55	94	200	291	G1/2	G1/8

Other dimensions are available as an option. Please contact ANGA.