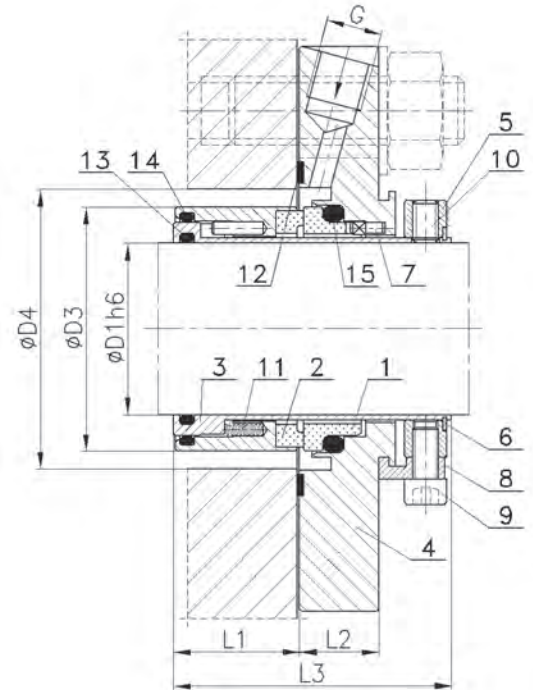
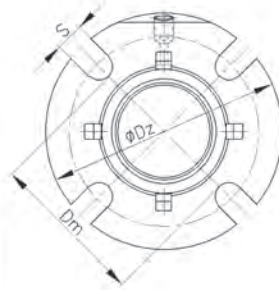
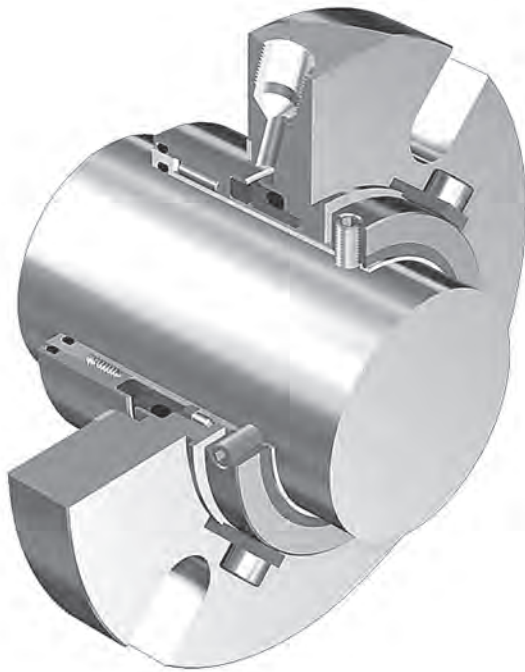


Operating limits*		
Pressure	p_{max}	2.0 MPa
Temperature	t_{max}	180 °C
Speed	v_{max}	12,5 m/s

* - see note on page 3.

- Single mechanical seal
- Compact (cartridge) design
- Balanced
- Dual directional
- Multispring



Dimensions (mm)

D1	D3	D4min	D4max	Dm	Dz	L1	L2	L3	S	G
24	39.2	40.0	46.0	52.5	102	27	18	61.5	14	1/4
25	40.2	41.0	49.0	55.5	105	27	18	61.5	14	1/4
28	43.2	44.0	52.5	58.5	108	27	18	61.5	14	1/4
30	45.2	46.0	55.5	62.0	111	27	18	61.5	14	1/4
32	47.2	48.0	55.5	62.0	111	27	18	61.5	14	1/4
33	48.2	49.0	55.5	62.0	111	27	18	61.5	14	1/4
35	50.2	51.0	57.5	66.5	111	27	18	61.5	14	1/4
38	55.0	57.2	60.5	73.0	127	28	18	63.5	14	1/4
40	57.0	58.0	60.5	73.0	127	28	18	63.5	14	1/4
43	60.0	61.0	63.5	73.0	127	28	18	63.5	14	1/4
45	62.0	63.5	70.0	76.0	133	28	18	63.5	14	1/4
48	65.0	66.7	73.0	84.0	140	28	18	63.5	14	1/4
50	67.0	68.0	73.0	84.0	140	28	18	63.5	14	1/4
53	70.0	71.0	76.0	84.0	140	29	19	65.0	14	1/4
55	72.5	74.0	79.5	93.5	146	29	19	65.0	18	1/4
58	75.0	76.2	82.5	93.5	146	29	19	65.0	18	1/4
60	77.0	79.4	86.0	100.0	152	29	19	65.0	18	1/4
63	84.0	85.8	92.0	106.5	159	30.5	19	66.5	18	1/4
65	86.0	88.9	95.0	106.5	159	30.5	19	66.5	18	1/4
70	90.0	92.1	98.5	109.5	159	30.5	19	66.5	18	1/4

Other dimensions are available as an option. Please contact ANGA.

Legend

- | | |
|--------------------|----------------------|
| 1. Stationary ring | 9. Socket head screw |
| 2. Rotating ring | 10. Grub screw |
| 3. Sleeve | 11. Springs |
| 4. Cover | 12. Flat gasket |
| 5. Clamping ring | 13. O-ring |
| 6. Expanding ring | 14. O-ring |
| 7. Pin | 15. O-ring |
| 8. Distance plate | |

Application

Type USC is designed for a wide range of applications. It withstands such fluids as cold and hot water, oils, petroleum products, poorly aggressive chemical substances and other fluids containing abrasive particles.

Materials

Part	Code
Stationary and rotating rings	A, B, U, Q
Secondary, flexible seals	E, P, K, V
Spring	M
Other metal parts	G