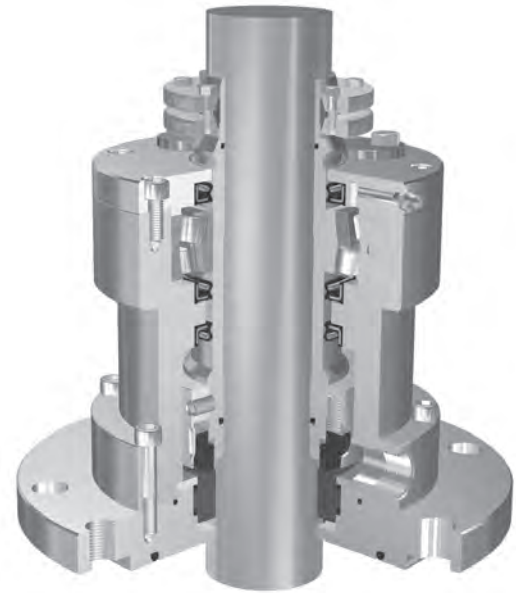
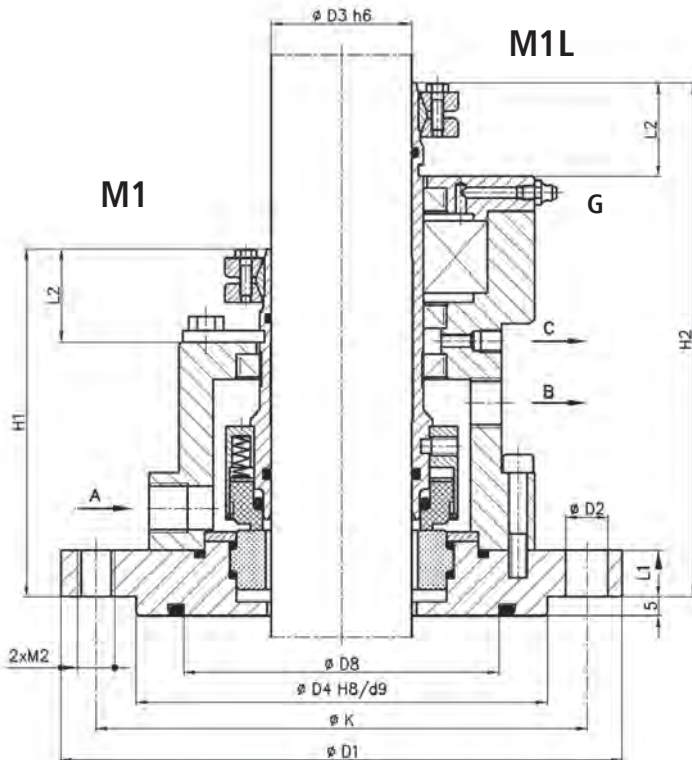


- Single mixer mechanical seal
- Balanced
- Multi-spring
- Dual directional
- Either without bearing (M1) or with integral bearing (M1L)

Operating limits*		
Pressure	$p_{max}$	0,6 MPa
Temperature	$t_{max}$	200 °C
Speed	$v_{max}$	4 m/s

\* - see note on page 3.



### CONNECTORS

A – coolant inlet  
B – coolant outlet

C – leakage outlet  
G – grease point

### Materials

Part	Code
Rotating ring	A, B, Q
Stationary ring	Q, V
Secondary, flexible seals	P, V, E, K
Spring	G, M
Other metal parts	G, M

### Application

Type M1, M1L mechanical seals are applied to seal top entry drives in agitators, mixers or blenders in cases when nonaggressive and non-hazardous media are sealed with the use of cooling-flushing liquid preventing from dry running. They can be made of materials that are approved for use in the pharmaceutical and food industries.

### Dimensions (mm)

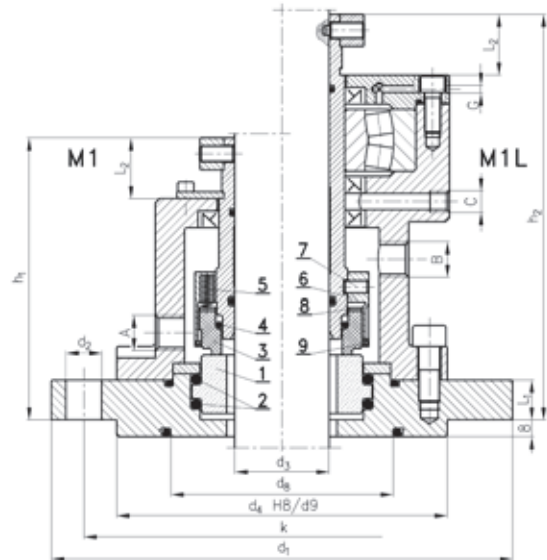
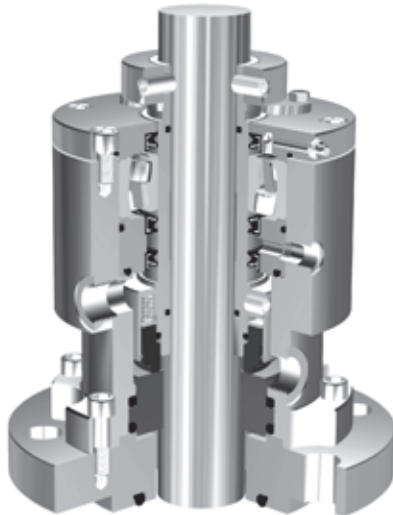
									M1	M1L		
D3	D1	N x D2	D4	D8	K	L1	L2	M2	H1	H2	A,B	C
30	175	4 x 18	110	70	145	20	40	M16	130	185	G3/8	G1/8
40	175	4 x 18	110	70	145	20	40	M16	130	190	G3/8	G1/8
50	240	8 x 18	176	135	210	20	40	M16	140	210	G1/2	G1/8
60	240	8 x 18	176	135	210	20	40	M16	140	210	G1/2	G1/8
70	240	8 x 18	176	135	210	20	45	M16	150	225	G1/2	G1/8
80	275	8 x 22	204	155	240	20	50	M20	160	245	G1/2	G1/8
90	275	8 x 22	204	155	240	20	50	M20	160	255	G1/2	G1/8
100	305	8 x 22	234	190	270	20	50	M20	160	255	G1/2	G1/8
110	305	8 x 22	234	190	270	20	55	M20	170	260	G1/2	G1/8
125	330	8 x 22	260	215	295	20	55	M20	170	270	G1/2	G1/8

Other dimensions are available as an option. Please contact ANGA.

Operating limits		
Pressure	$p_{max}$	0,6 MPa
Temperature	$t_{max}$	200 °C *
Speed	$v_{max}$	4 m/s

\* - see diagram „Thermal resistance of elastomers“.

- Single mechanical seal
- Balanced
- Multi-spring
- Dual directional
- Either without bearing (M1) or with integral bearing (M1L)



## Materials

Part	Code
Rotating ring	A, B, Q
Stationary ring	U2, Q, V, S
Secondary, flexible seals	E, K, V
Spring	G, M
Other metal parts	F, G

## Legend

1. Stationary ring type M0
2. O-ring
3. Rotating ring
4. O-ring
5. Spring
6. Seal housing
7. Set screw
8. Spring thrust ring

### CONNECTORS

- A – coolant inlet
- B – coolant outlet
- C – leakage outlet
- G – grease point

## Application

Type M1, M1L mechanical seals are applied to seal top, bottom and side entry drives in agitators, mixers or blenders in case when non-aggressive and non-hazardous media are sealed with the use of cooling liquid preventing against dry running.

## Dimensions (mm)

d3	d1	n x d2	d4	d8	k	l1	l2	h1	h2	A,B	C,G
40	175	4x18	110	70	145	22	22	130	191	G 3/8	G 1/8
50	240	8x18	176	135	210	22	22	132	201	G 3/8	G 1/8
60	240	8x18	176	135	210	22	22	138	207	G 3/8	G 1/8
70	240	8x18	176	135	210	22	25	147	229	G 3/8	G 1/8
80	275	8x22	204	155	240	24	25	155	246	G 1/2	G 1/8
90	275	8x22	204	155	240	24	25	155	256	G 1/2	G 1/8
100	305	8x22	234	190	270	28	25	158	262	G 1/2	G 1/8
110	305	8x22	234	190	270	28	25	161	277	G 1/2	G 1/8
120	330	8x22	260	215	295	28	25	165	285	G 1/2	G 1/8

Other dimensions are available in option. Please contact ANGA.