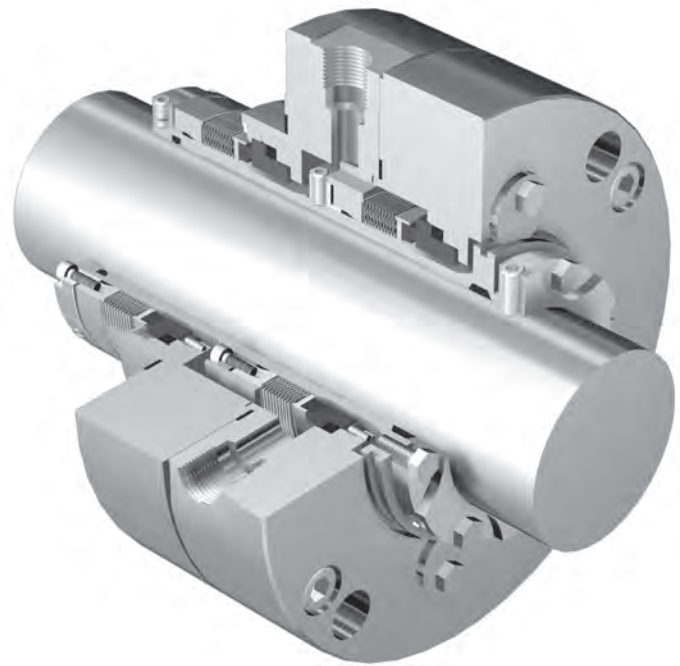
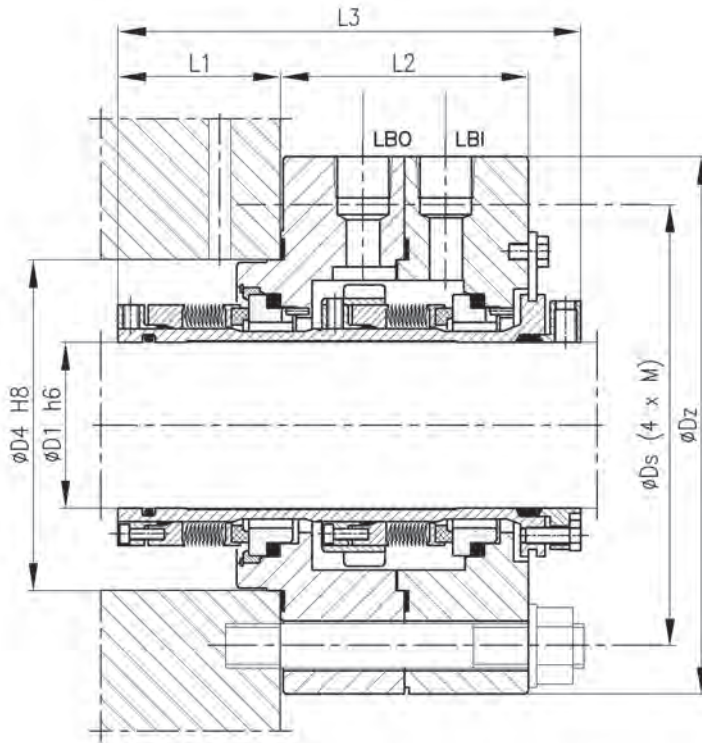


- Double compact (cartridge) mechanical seal
- Metal bellows
- Multi-spring, balanced, dependent on the direction of rotation
- Design according to EN ISO 21049 (API 682): type C, category 2 or 3, arrangement 2 or 3, configuration 2CW-CW or 3CW-FB

Operating limits*		
Pressure	p_{max}	1.2 MPa
Temperature	t_{max}	400 °C
Speed	v_{min}	25 m/s

* - see note on page 3.



Dimensions (mm)

D1	D4	Ds	Dz	L1	L2	L3	M
20	70	105	140	48	76	140	12
30	80	115	150	53	78	147	12
40	90	125	160	58	76	150	12
50	100	140	180	54	90	160	16
60	120	160	200	59	89	166	16
70	130	170	210	63	86	168	16
80	140	180	220	68	85	172	16
90	160	205	245	63	92	177	20

Other dimensions are available as an option. Please contact ANGA.

Application

EPD is a double mechanical seal with metal bellows designed to work with hot hydrocarbons in the petroleum refining processes.

The seal requires the application of auxiliary installations according to EN ISO 21049 (API 682) Plan 52 or Plan 53.

Materials

Part	Code
Rotating ring	A, B, Q
Stationary ring	Q
Secondary, flexible seals	G
Welded bellows	G, M, T
Other metal parts	T, M